

**CFS**  
DIGITAL  
EDITION

**CAUTION:** THE INFORMATION  
IN THIS PUBLICATION MAY  
BE SUPERSEDED BY NOTAM  
OR AIP SUPPLEMENT

EFFECTIVE 0901Z **8 NOVEMBER 2018**  
TO 0901Z 3 JANUARY 2019

---

# CANADA FLIGHT SUPPLEMENT

DIGITAL EDITION

## ATLANTIC TERMINAL AND ENROUTE DATA

AIP Canada (ICAO) Part 3 - Aerodromes (AD)  
Department of National Defence Flip GPH 205

Serving a world in motion  
[navcanada.ca](http://navcanada.ca)



**CFS**  
DIGITAL  
EDITION

**CAUTION:** THE INFORMATION  
IN THIS PUBLICATION MAY  
BE SUPERSEDED BY NOTAM  
OR AIP SUPPLEMENT

EFFECTIVE 0901Z **8 NOVEMBER 2018**  
TO 0901Z 3 JANUARY 2019

---

# CANADA FLIGHT SUPPLEMENT

DIGITAL EDITION

## PRINCE EDWARD ISLAND TERMINAL AND ENROUTE DATA

AIP Canada (ICAO) Part 3 - Aerodromes (AD)  
Department of National Defence Flip GPH 205

Serving a world in motion  
[navcanada.ca](http://navcanada.ca)

**NAV**  
CANADA

Published by NAV CANADA in accordance with ICAO Annexes 4 and 15  
of the Convention on International Civil Aviation

Cartography and Printing: NAV CANADA

Source of Canadian Civil Aeronautical Data: © 2018 NAV CANADA All rights reserved

Source of Canadian Military Aeronautical Data:  
Her Majesty the Queen in Right of Canada Department of National Defence

## PRINCE EDWARD ISLAND

## AERODROME / FACILITY DIRECTORY

## CABLE HEAD AIRPARK PE

CCA3

<b>REF</b>	N46 26 36 W62 35 29 1.5NW 18°W (2015) UTC-4(3) Elev 94' A5003	<p>The chart shows the airpark layout with runways 07, 14, and 32. Runway 14 is 4196x100 feet and runway 07 is 3195x75 feet. A 5NM radius circle is centered on the airpark. Schooner Creek is shown to the south. Elevation is 94 feet. The chart also shows various navigational aids and terrain features.</p>
<b>OPR</b>	J. G. Whitty 902-961-2311 Reg PN	
<b>PF</b>	C-1 D-2,3,4,5,6	
<b>FLT PLN</b>	NOTAM FILE CYYG	
<b>FIC</b>	London 866-WXBRIEF (Toll free within Canada) or 866-541-4104 (Toll free within Canada & USA)	
<b>ACC</b>	(IFR only) Moncton 506-867-7177 or 866-480-8200.	
<b>RWY DATA</b>	Rwy 14(136°)/32(316°) 4196x100 TURF Rwy 07(075°)/25(255°) 3195x75 TURF	
<b>RCR</b>	Opr No win maint. Rwys soft dur spring thaw.	
<b>LIGHTING</b>	14-(TE LO) 32-(TE LO) ARCAL-123.2 Rwy 14/32 only (3 clicks on - 5 clicks off)	
<b>COMM</b>		
<b>ATF</b>	tfc 123.2 5NM 3100 ASL	
<b>CAUTION</b>	Marked p-line on Rwy 25 end.	

## PRINCE EDWARD ISLAND

## AERODROME / FACILITY DIRECTORY

## CHARLOTTETOWN (QUEEN ELIZABETH HOSP) PE (Heli)

CDV3

<b>REF</b>	N46 15 20 W63 05 56 Adj E 18°W (2014) UTC-4(3) Elev 20' A5003	<p>The map shows the location of the Queen Elizabeth Hospital heliport in Charlottetown, PE. The heliport is marked with a black square and a white cross. The Hillsborough River is shown to the east. The map includes a grid, elevation markers (ELEV 20), and a compass rose indicating the 163° ARR/DEP direction.</p>
<b>OPR</b>	Queen Elizabeth Hosp 902-894-2031 Cert PPR	
<b>FLT PLN</b>	NOTAM FILE CYYG	
<b>FIC</b>	London 866-WXBRIEF (Toll free within Canada) or 866-541-4104 (Toll free within Canada & USA)	
<b>ACC</b>	(IFR only) Moncton 506-867-7177 or 866-480-8200.	
<b>HELI DATA</b>	108' dia circular asphalt (rstd to twin engine heli with max overall length of 52.5')	
<b>LIGHTING</b>	FH	
<b>COMM</b>	<b>RCO</b> Halifax rdo 123.55 (FISE) 126.7 (bcst) <b>MF</b> Charlottetown rdo 118.0 5NM centred on Charlottetown land A/D 2.3NM SE 3200 ASL (CAR 602.98)	
<b>PRO</b>	Arr/dep 163° fr heli.	
<b>CAUTION</b>	140' unlighted Power Plant stacks 250' NE of heli.	

**CHARLOTTETOWN FSS – RCO**

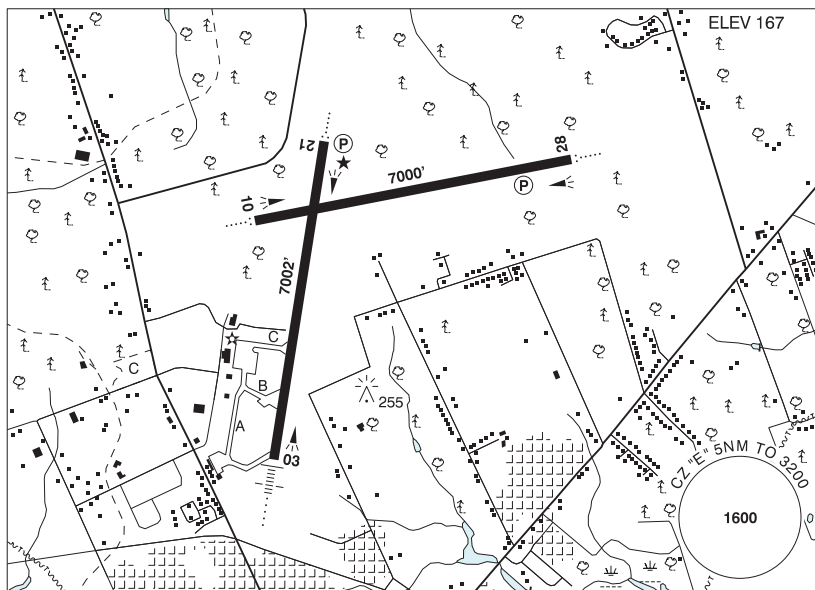
**Sydney** 122.0 (RAAS) (U) (N46 10 W60 03)

---

---

**CHARLOTTETOWN PE**

**CYYG**



<b>REF</b>	N46 17 21 W63 06 55 3N 18°W (2014) UTC-4(3) Elev 167' A5003 LO8 HI6 CAP
<b>OPR</b>	Charlottetown Airport Authority Inc. 902-566-7997 Cert
<b>PF</b>	A-1,6 C-2,3,4,5
<b>CUST</b>	AOE/60 (368 with staged off-loading) 888-226-7277 12-04Z±
<b>FLT PLN</b>	NOTAM FILE CYYG
<b>FIG</b>	London 866-WXBRIEF (Toll free within Canada) or 866-541-4104 (Toll free within Canada & USA)
<b>ACC</b>	(IFR only) Moncton 506-867-7177 or 866-480-8200.
<b>WX</b>	METAR H24. TAF H24, issue times: 00, 06, 12, 18Z.
<b>SERVICES</b>	Call out chg may be levied for one or more svcs.
<b>FUEL</b>	100LL 11-01Z± ctc 902-394-4168, JA-1 (FSII avbl) 09-00Z± O/T call out chg will apply. Fax/tel: 902-566-3835. Duty tel: 902-629-0906 aft hr 902-393-1792
<b>OIL</b>	All
<b>S</b>	1,2
<b>ARFF</b>	DESIGNATED CAT 6 (CAT 7 2 hr PN) 0930-0400Z±, O/T call out chg.
<b>SUP FL</b>	D & A-ice
<b>MIL CON</b>	Aircraft Services International Group 902-566-3835
<b>RWY DATA</b>	Rwy 03(027°)/21(207°) 7002x150 ASPH Rwy 10(097°)/28(277°) 7000x150 ASPH RESA: 03/21 492'
<b>RWY CERT</b>	Rwy 03 RVR 1200(1/4sm)/Rwy 21 RVR 1200(1/4sm) Rwy 10 RVR 1200(1/4sm) Day only/Rwy 28 RVR 1200(1/4sm) Day only
<b>RCR</b>	Opr CRFI avbl ltd hrs. No win maint 0230-0900Z±. PLR/PCN.
<b>LIGHTING</b>	03-AN(TE HI), 21-AO(TE HI) P2, 10-AO(TE ME), 28-AO(TE ME) P2

## PRINCE EDWARD ISLAND

AERODROME / FACILITY DIRECTORY

## CHARLOTTETOWN PE (Cont'd)

CYYG

## COMM

<b>RADIO</b>	118.0 (E) (emerg only 902-368-2210)
<b>RCO</b>	Halifax rdo 123.55 (FISE) 126.7 (bcst)
<b>MF</b>	rdo 118.0 5NM 3200 ASL (CAR 602.98)
<b>PAL</b>	Moncton Ctr 135.65

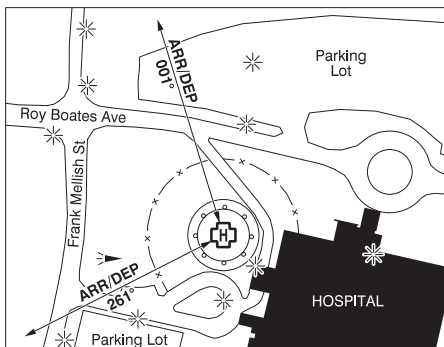
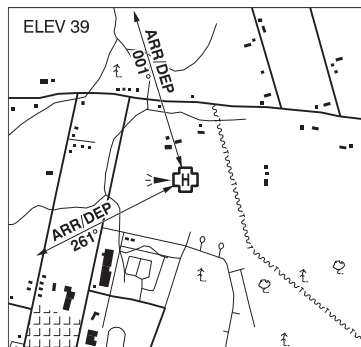
## NAV

<b>VOR/DME</b>	YYG 113.8 Ch 85 N46 17 52 W63 07 11 (206°)
<b>ILS</b>	IYG 110.9 (Rwy 03) RVR

## PRO

<b>PRO</b>	Caution during win ops: Twy C may be the only serviceable twy.
------------	--



**SUMMERSIDE (PRINCE COUNTY HOSP) PE (Heli)****CCH6**

<b>REF</b>	N46 25 04 W63 46 26 Adj 18°W (2014) UTC-4(3) Elev 39' A5003
<b>OPR</b>	Health PEI 902-438-4293 Cert PPR
<b>PF</b>	A-1,2,4 C-3,5,6,7,8
<b>FLT PLN</b>	NOTAM FILE CYSU
<b>    <b>FIG</b></b>	London 866-WXBRIEF (Toll free within Canada) or 866-541-4104 (Toll free within Canada & USA)
<b>    <b>ACC</b></b>	(IFR only) Moncton 506-867-7177 or 866-480-8200.
<b>HELI DATA</b>	FATO/TLOF 86' dia ASPH Safety Area 115' dia GRASS Max heli overall length 57.4'
<b>    <b>RCR</b></b>	Opr
<b>LIGHTING</b>	RY(LO) green LED
<b>COMM</b>	
<b>    <b>ATF</b></b>	UNICOM (AU) ltd hrs (at land A/D 2.4NM WNW) O/T tfc 122.95 5NM 3100 ASL
<b>PRO</b>	Arr/dep 001° & 261° fr heli, slope 16% (H2), day/night use.
<b>CAUTION</b>	Tower 200 AGL, 225 ASL (N46 25 20 W63 46 13) 0.3NM 049° fr heli. Unmarked P-line 623' NW of heli.

## PRINCE EDWARD ISLAND

## AERODROME / FACILITY DIRECTORY

## SUMMERSIDE PE

CYSU

<b>REF</b>	N46 26 26 W63 50 01 3.5NNW 18°W (2013) UTC-4(3) Elev 56' A5003 LO8 HI6 CAP	
<b>OPR</b>	Slemon Park Corp 902-432-1760 Reg	
<b>PF</b>	B-1,2,3,5 C-1,2,3,4,5,6	
<b>CUST</b>	888-226-7277 13-21Z± Mon-Fri exc hols; mil fit and CANPASS permit members only	
<b>FLT PLN</b>	NOTAM FILE CYSU	
<b>FIC</b>	London 866-WXBRIEF (Toll free within Canada) or 866-541-4104 (Toll free within Canada & USA)	
<b>ACC</b>	(IFR only) Moncton 506-867-7177 or 866-480-8200.	
<b>WX</b>	AUTO 866-436-6059 (see COMM)	
<b>SERVICES</b>	Call out chg may be levied for one or more svcs.	
<b>FUEL</b>	100LL, JA-1 (FSII avbl) Ltd hrs contact Opr	
<b>MILCON</b>	Slemon Park Corp (Irving Oil) 902-432-1760 Ltd hrs contact Opr.	
<b>RWY DATA</b>	Rwy 05(054°)/23(234°) 8000x200 asphalt/concrete	
<b>TWY</b>	Twy B & D not lighted. No win maint Twy B.	
<b>RCR</b>	Opr	
<b>LIGHTING</b>	05-AD AS(TE LO)V2 2.5°, 23-AD AS(TE LO)V2 2.5° all lighting O/R 1 hr PN	
<b>COMM</b>		
<b>ATF</b>	UNICOM (AU) ltd hrs O/T tfc 122.95 5NM 3100 ASL	
<b>AUTO</b>	122.55	
<b>NAV</b>		
<b>NDB</b>	5B 254 (M) N46 23 49 W63 52 54 Pvt	
<b>PRO</b>	Rgt hand circuits Rwy 23 (CAR 602.96)	
<b>CAUTION</b>	Parajumps at A/D to 12,500'. Training areas west & south of A/D, see Moncton VTPC - Training areas. Migratory bird activity spring/fall. Small arms firing range 820m NE Thld 23 and 300m left of centreline. Rwy not recommended for high performance acft due FOD hazard. Wind turbines aprx 1.3NM SE Thld 23 410 AGL.	